



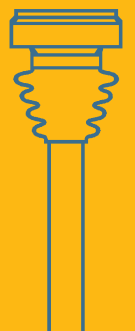
**Constant velocity joints & driveshafts
for Industry and Specialty Vehicles**

> GKN Land Systems: Leading Technology & Engineering

GKN Land Systems is a leading provider of technology differentiated power management solutions and services. It designs, manufactures and supplies products and services for the global agricultural, construction, utility vehicles and industrial machinery markets. In addition, it provides global aftermarket distribution and comprehensive throughlife support.

GKN PowerTrain Systems & Services is your preferred partner for

- > Driveline parts and systems**
- > Industrial parts and systems**
- > Repair and maintenance**
- > Complete design and build of special drivelines**





➤ The solution for vibration-free transmission of torque

Left to right:
Vehicle driveshaft
Plunging ball joints
Heavy Duty CV shaft

GKN constant velocity (CV) driveshafts are ideally suited for applications where unequal joint angles are encountered and low vibration generation is needed. They are reliable and proven transmission elements.

Typical applications of GKN constant velocity driveshafts, for example:

- Bottling machines
- Agricultural and forestry vehicles
- Garbage Trucks
- Textile machines
- Mining machinery
- Printing machines
- Wind turbines
- Pump drives
- Marine propulsion (Aquadrive system)
- Dynamometers
- Commercial vehicles
- Railroad equipment
- Military vehicles



© Reform-Werke



© Force Protection Europe



Applications



> Constant velocity joints and driveshafts

Left to right:
 Plunging joint with tube connection
 CV joint coupling for railway vehicles
 CV shaft combining plunging and fixed joints
 Aquadrive Antivibration System

> Plunging joints

Up to 22° articulation angle, dependent on joint type.



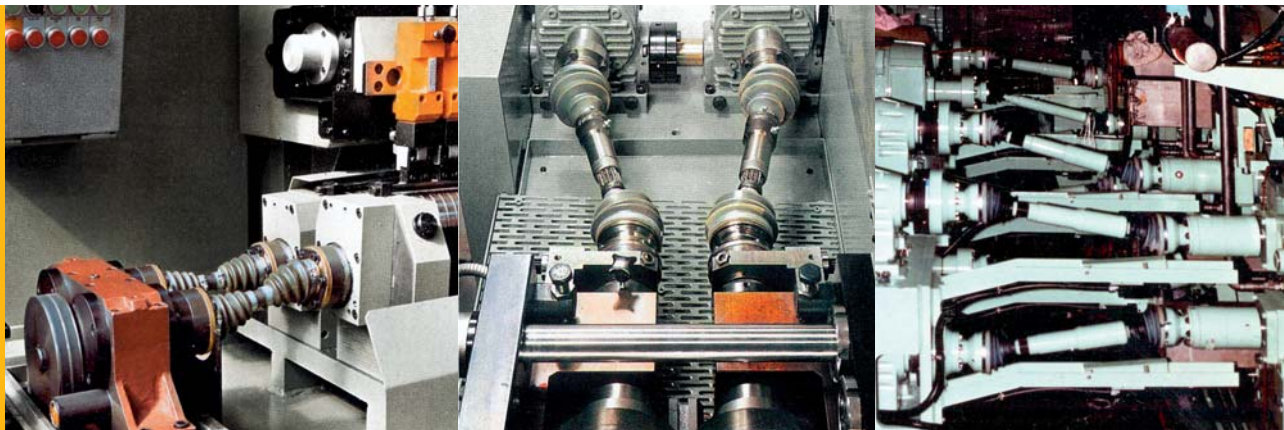
Type	max. stat. torque rating [Nm]	Outer diameter of joint	max. plunge depth [mm]
05	1,500	83.65	+/- 8
10	2,300	94	+/- 6
13	2,900	99.73	+/-11
15	3,700	108	+/-8
21	6,000	128	+/-12
30	9,200	148	+/-12.5
32	13,200	180	+/-12.5
42	19,700	192	+/-12
48	22,000	220	+/- 12.5
60	67,500	275	+/- 15

> Fixed ball joints

Up to 47° articulation angle, depending on joint type.



Type	max. stat. torque rating [Nm]	Outer diameter of joint
05	1,300	74
10	1,700	83
12	2,350	92
15	3,040	100
21	5,700	119
30	9,700	140
32	14,000	180
42	23,000	192



Applications

> Your specialist for Driveline Engineering Solutions



Low plunge resistance
in the joint
= Low bearing load

Constant velocity
at every angle

Vibration free at
high speeds up
to 8,000 r.p.m.

Compact design.
From 130mm
flange to flange.

Angles up to 22°,
no alignment required

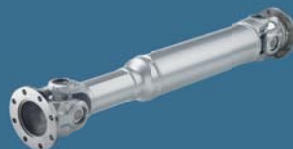
Lubricated for life

Angles up to 47°,
no alignment required



GKN Service International GmbH
Mühlheimer Str. 163
63075 Offenbach / Main, Germany

For full catalogue or information on CV
driveshafts please contact our Engineering:
technicalsupport.offenbach@gkn.com



GKN Land Systems also provides
a full spectrum of Cardan shafts

For catalogue or information on Cardan
shafts please contact:
technicalsupport.duesseldorf@gkn.com

GKN Land Systems
PowerTrain Systems & Services
Headquarters:
GKN Service International GmbH
Nussbaumweg 19–21
51503 Rösrath, Germany
www.gknservice.com

© GKN. All rights reserved.

