



Made for Motion



KTR Company News

NEWS

- New sizes for small spaces - KTR supplements ROTEX® GS Compact with sizes 8, 13 and 16
- Coupling. Cooling. Compressing. - KTR makes efforts on industrial compressors
- Success is a question of selection - Electronic Services free of charge for our customers
- Renewing. Growing. Excelling. - Apprenticeship, qualification and advanced training in KTR

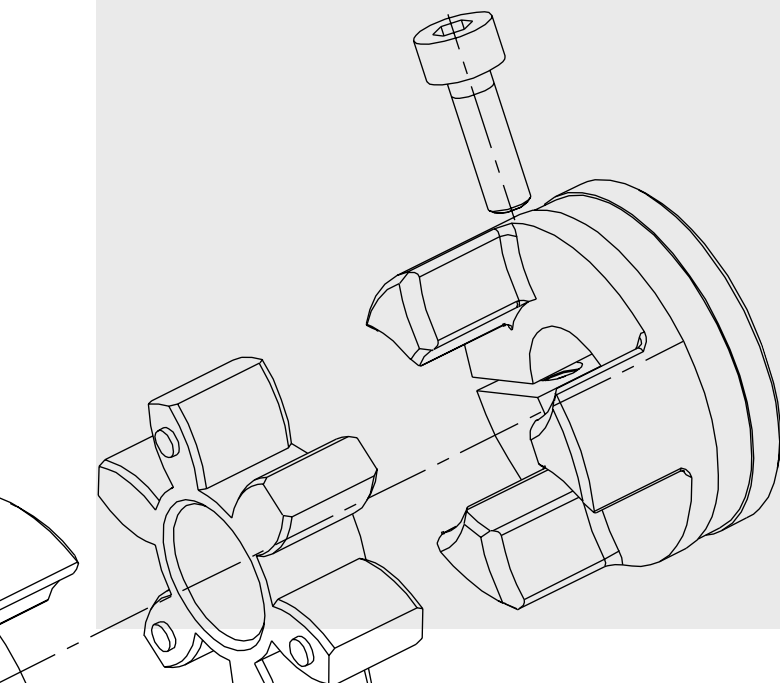
Fairs and Events

- Come to see KTR live: Fairs & Events

Power is not a problem

An ant is famous for its power: some species carry fifty times their own weight over hill and dale without difficulty. They owe this ability not only to the structure of their muscles, but also to their size. Miniature couplings utilize similar principles of power transmission: The three new sizes of the ROTEX® GS Compact shaft coupling convince by high power in a small space and help you to set things in motion – just like an ant!

More details about the new ROTEX® GS Compact sizes are available on page 2.



New sizes for small spaces -

KTR supplements ROTEX® GS Compact with sizes 8, 13 and 16

In 1966 the prototype of the torsionally flexible jaw coupling ROTEX® came into being. Since that time the classical three component design has become synonymous with shaft couplings, making KTR – who continue to launch new design types and revised products – the global market leader in the range of elastomer couplings. To keep this status it is not always necessary to develop larger products. Today there is one thing that has become vital: becoming smaller! The backlash-free miniature couplings of the ROTEX® GS series have set standards in this respect for several years. We have recently supplemented our portfolio, and consequently the application range, by adding new sizes for smaller spaces. Thinking small should be a big concern!

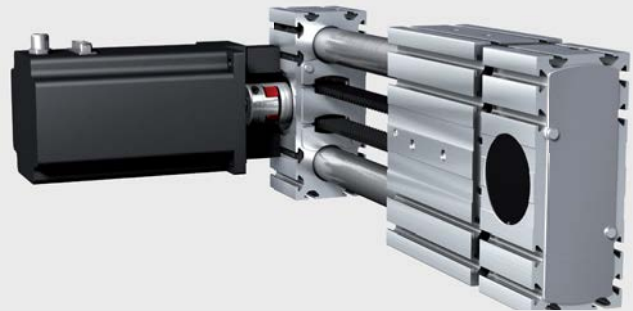
Smaller and smoother - ROTEX® GS Compact

Be it automation and linear technology, medical and laboratory technology, or other miniature drives: Precision drives continue to become smaller, more energy-efficient and more individual while torques and speeds continue to increase. To meet the growing demands on power while simultaneously reducing mounting spaces, we have extended the ROTEX® GS Compact series by the sizes 8, 13 and 16. As a result, the backlash-free miniature couplings are now up to 1/3 shorter than the standard series.



Facilitating the assembly

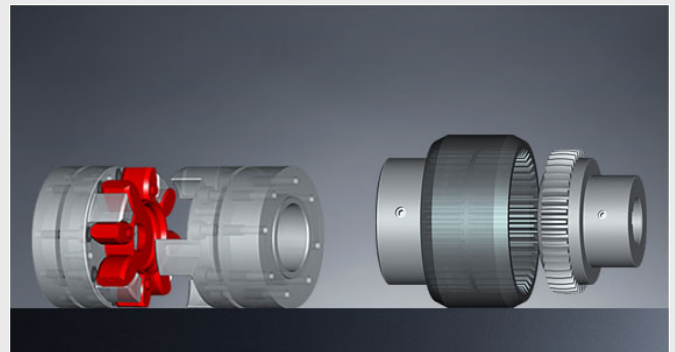
The spiders of the new models are available in Shore hardness 80Sh-A, 98Sh-A and 64Sh-D. By varying the elastomer hardness the torsional stiffness, vibration characteristics, and, of course, the torque can easily be adjusted to the individual demands of the application. Subject to the drilled spiders, another benefit is that the shafts can be inserted deeper into the coupling which means that they require an extremely minimised axial space, i. e. less mounting space.



ROTEX® GS expansion hub for axis

It is all a question of selection

At www.ktr.com our online tools quickly and comfortably allow the configuration of almost every ROTEX® GS coupling requested and produce a true to scale drawing once the selection has been successfully completed.



The drawings are displayed either directly as a PDF format or via TDT webgraph. In this way we make it easy for our customers to display the sizes on a small scale. Our newest sizes (8, 13 and 16) will soon be added for selection.

We will introduce our new “triplets” to you on the occasion of the Motek 2013 for the first time.



Hall 9
Booth 9204

07. - 10.10.2013

[ROTEX® GS Compact](#)

[KTR Online-Tools](#)

Coupling. Cooling. Compressing.

KTR makes efforts on industrial compressors

All over the world industrial compressors generate pressure for which power is necessary. The suppliers of drive components help to convert power into pressure reliably. In this context, couplings, as links in power transmission, and coolers, as efficient thermo managers, play a key role. If they are convincing in their roles by power, adaptability and a cool operation, they will be used in the long run. This is the case with KTR's components which have been used successfully by leading compressor manufacturers worldwide for several years.

No matter whether mobile or stationary compressors, screw or scroll compressors, or a small compressor block with high speeds or a large compressor block with low speeds are concerned: KTR provides the suitable coupling and cooling systems for a wide range of industrial compressors. Our solutions have proven their worth, specifically with the widespread screw compressors.

For mobile compressors: BoWex-ELASTIC® HE

The leading manufacturers of mobile compressors have successfully relied on the curved-tooth coupling BoWex-ELASTIC® HE for many years. This flange coupling version combines the benefits of the established BoWex® curved toothing with the flexibility of a highly flexible coupling in a compact design.

This allows the coupling to reliably dampen and reduce torsional vibrations and shock loads that may arise. At the same time, following customer request, the application range of the HE has been extended to include new sizes 150, G150, 200 and G200, allowing use of the BoWex-ELASTIC® HE in applications with driving power up to 2 MW.



For stationary compressors with a constant speed: ROTEX® and POLY-NORM®

For stationary compressors with a constant speed, we would recommend using standard products: ROTEX® and POLY-NORM® shaft couplings.

Not only does ROTEX® impress with its excellent balancing qualities, but it also boasts a higher temperature resistance and a long service life thanks to upgraded spiders made of T-PUR®. In this way, maintenance intervals can be significantly reduced. Other big customers of KTR prefer to use ROTEX® S-H with SPLIT hubs. These tough cast iron hubs are mechanically separated by “cracking” and bolted together again during assembly. The benefit is that the hubs can be assembled and disassembled radially without having to disassemble the power packs which is ideal with narrow mounting spaces and heavy drive trains! By launching such innovations KTR does not only meet the pressure for high technical



performances, but also the growing pressure on costs and time with production, assembly and maintenance. .

Being an alternative to the ROTEX® coupling, the POLY-NORM® couplings allow for slightly reduced shaft distances in the drive and emphasize a slightly smoother power transmission using a softer spider made of NBR (Perbunan). Type ADR is particularly easy to assemble and maintain.

For stationary compressors with variable speed: BoWex® HEW Compact

The stationary compressors more and more rely on energy-efficient drives with variable speed. Here BoWex® HEW Compact is the ideal solution. This highly flexible coupling reliably compensates for axial, radial and angular shaft displacements while being specifically easy to assemble thanks to its compact design and the ability for axial plug-in.



For all: the MMC combined cooler

Wherever compression is made under high pressure, cooling with high power is necessary. For mobile and stationary compressors we recommend the new MMC combined cooler, which combines several cooling circles within one housing. As a water cooler it cools the coolant, as an oil cooler it cools hydraulic and gear oil and as a charge air cooler it provides for the right temperature of the charged air with mobile compressors. In addition it can even be used as a fuel cooler.



For you: our service

All couplings and cooling systems are developed, selected and tested thoroughly in our in-house R & D centre and in close cooperation with our customers, ensuring problem-free performance!

Couplings 

Coolers 

Success is a question of selection

Electronic Services free of charge for our customers

Click your way to success – with the Electronic Services by KTR! Our numerous online tools will allow you to promptly find the right product for the application requested by you. Our electronic data interchange with our Shop will provide for a smooth handling of orders afterwards. All programs and processes are constantly updated.

In your interest: the new selection program for CLAMPEX® clamping elements

With immediate effect the KTR homepage will present the new selection program for all CLAMPEX® clamping sets. Having entered the torque and axial force, as well as the material of shaft and hub, it will automatically calculate the required external diameter of the hub and the safety figure required against slipping. Another click will present the product as a clearly arranged component drawing.



Tank heater and cooler

We have also increased the selection of our hydraulic components, too: You are now in a position to calculate the right tank heater online. Having entered the heating capacity (KW), or projected preheating period (h), volume, type and temperature of oil, and also the tank size, the program will calculate the required heating capacity or preheating period. Important updates have also been performed with the selection program for oil/air coolers (OAC).

Couplings

It goes without saying that the core of our selections is our extensive configuration program for couplings: having entered basic technical data or applications, the program will instantly display a list of suitable couplings. When you enter the type, size and bore, you will be allowed to select a specific coupling. A drawing comprising all necessary technical specifications will be generated at the push of a button. A respective order list can immediately be transferred to the KTR Shop and further processing.

3D and 2D-CAD library

CAD systems facilitate your design work. Assisting the creation of a clear project picture, extensive 2D and 3D-CAD libraries of almost every product are available for free download from KTR's website with 3D models provided in a STEP or IGES format. The 2D drawings are available for download as a DXF format. A simple and clearly structured user guide allows you a quick selection of the requested types which will be sent to you as a ZIP file by e-mail. A new product in the 3D-SpaceCenter is the RADEX®-NC servo lamina coupling which is available in all sizes from 5 to 42.

EDI – Electronic Data Interchange

The subsequent ordering process is handled safely and smoothly by our up-to-date electronic data interchange system. The standardised data interchange allows for a flexible communication with the systems of our business partners, providing a precise ordering process and assuring extremely short reaction times.

Data processing centre certified by TÜV (Technical Inspection Agency)

On June 3rd, 2013 we inaugurated KTR's new data processing centre. In its final inspection report the TÜV (Technical Inspection Agency) confirmed: "The data processing centre is an excellent basis for a highly competent data processing operation and raises expectations for a particularly high energy efficiency. All demands on a certification are competently complied with." As a result KTR's new data processing centre achieves all target levels while meeting high ecological demands. In this way we keep remain highly available to our customers while being almost invisible to the environment.



[KTR Online-Tools](#)



Renewing. Growing. Excelling.
Apprenticeship, qualification and advanced training in KTR

KTR is growing above-average, namely by our own efforts, and it is this kind of organic growth that we choose to build on. For this reason two items are essential for us: developing new young talents and the continued growth of current employees. That is the only way we can keep pace with the growing and changing requirements of the worldwide market. And excelling together!

Excellent apprenticeship awarded – Made for Motion

We lay the foundation for healthy growth by inspiring the right people for our family business. That is why we are continuously looking for motivated young people who want to set things in motion. We offer flexible working hours and interesting remuneration schemes, an excellent working atmosphere, outstanding career opportunities and a high level of job security.

We provide training for the following apprenticeships:

- Industrial clerk
- Technical product designer
- Warehouse logistics specialist
- Cutting machine operator
- Qualified IT specialist

It is not surprising that KTR was awarded with the prize “Care-er with apprenticeship” for the fourth consecutive year by the Chamber of Commerce North Westphalia and was acknowledged with the maximum number of points when being awarded as “Family-friendly” company in metal and electrical industry in North Rhine-Westphalia.



KTR welcomes 10 new apprentices

Progress is made by training

We make every effort to ensure that our employees enjoy their work – ideally until they retire! That is why we make a wide offer of training programmes available to all members of our staff throughout the duration of their career: starting from dual study programmes and preparatory training measures, and up to master craftsman qualifications. In addition we offer training in English and EDP. Apart from that, we also supervise bachelor’s theses, master’s theses and doctoral theses.

Fit and Fun

Following our credo “Made for Motion” we literally keep our staff in motion: by fitness programmes available to every employee and health checks for the management. Our employees are, and keep on being, our most important “drive components”!

Fairs and Events

Come to see KTR live: Fairs & Events

Reading is a good thing, but seeing and touching are even better! That is why we prefer to introduce our innovations live. Within the next few weeks there will be two opportunities to do so: the EMO in Hannover this September and the Motek in October. Our trained on site staff will be pleased to answer your questions and we look forward to your visit!

SYNTEX®-NC

The SYNTEX®-NC overload system, previously introduced at this year’s Hannover Fair, confidently meets the request of numerous design engineers for more compact and light-weight components. The backlash-free overload coupling system, with its short dimensions, is characterized by high reliability and



SYNTEX-NC® with ROTEX® GS

power density as well as a low mass moment of inertia. A compact arrangement assures for a short reaction time which is ideal for the compact drives of machine tools, control and positioning technology as well as packaging machines and special purpose machinery.

ROTEX® GS Compact, sizes 8, 13 and 16

On the occasion of the Motek we will present new miniature models and sizes of the backlash-free ROTEX® GS Compact for the first time. Benefits are listed on page 2.



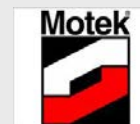
ROTEX® GS Compact size 13



Hall: 25
Booth: D46

September

16th to 21st, 2013, Hanover



Hall: 9
Booth: 9204

October

7th to 10th, 2013, Stuttgart